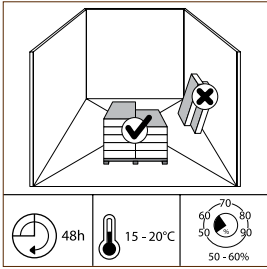
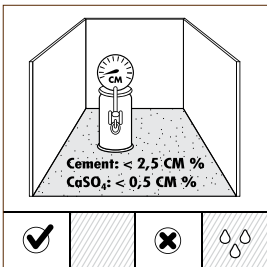


For best results, it is essential that you follow the installation instructions exactly.

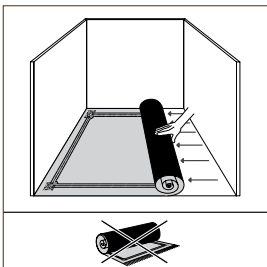
## PREPARATION



Let the planks acclimatize for 48 hours in the unopened packaging at the normal room temperature, in the middle of the room where the floor is to be installed. The ideal conditions are 15-20°C (59-68 °F) at a relative humidity of 50-60%.



Fresh screed must dry for at least 1 week per cm thickness up to 4 cm and 2 weeks per cm thickness over 4 cm, with sufficient ventilation. For example, a 6 cm screed must dry for at least 8 weeks. For the thickness over 6 cm you must add 3 to 4 weeks. The moisture content must be less than 2.5% for cement-bound screed (CM method) and 0.5% for an anhydrite-bound screed.



Remove any damp-open floor covering (carpet, needle felt, etc.) first. Damp-proof floor covering (PVC, linoleum, etc.) does not have to be removed. Always use an underlay. We recommend the use of Quick • Step® underlay.

## WOODEN SUBFLOOR:

Remove any existing floor covering first.

No signs of mould and/or insect infestations should be present.

Make sure the subfloor is level. Nail down any loose parts.

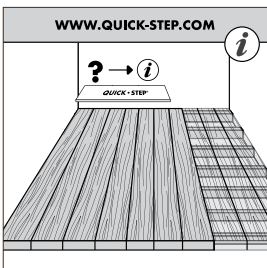
If your plank floor is on the ground level, lay a plastic foil first (Quick • Step® Screen).

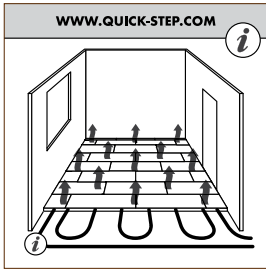
Apply a levelling floor (Quick • Step® Softboard) on top of this. For a perfect subfloor preparation, it is recommended to lay a Quick • Step® underlay on top of the Softboard to level any unevenness between the Softboard planks.

Install the new floor at ninety degrees to the existing subfloor.

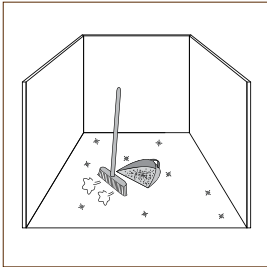
The crawl space under the plank floor must be sufficiently ventilated. Remove any obstacles

and make sure there is sufficient ventilation (minimum 4 cm<sup>2</sup> total ventilation openings per m<sup>2</sup> of floor). The moisture content of the wood must not exceed 10%.

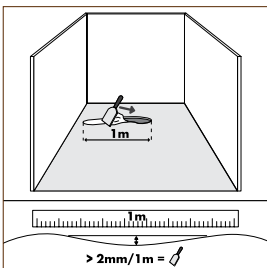




Additional instructions apply for floor heating. [Click here for more information.](#)



Make sure the floor base is flat, clean, firm and dry.

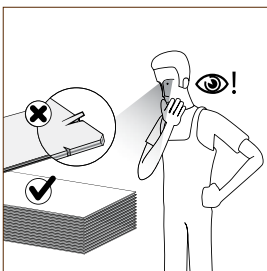


Make sure the floor base is flat. Any unevenness greater than 2 mm over the length of 1 meter must be smoothed out.

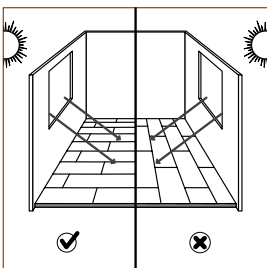
Check whether the old skirting-board can be removed. You can also leave the skirting on the wall and finish the floor with Quick•Step® profiles.

Check that the doors can still open and close after the floor and underlay have been installed (minimum + 1 cm)

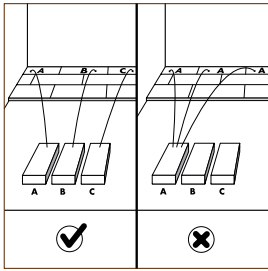
## FOCUS POINTS



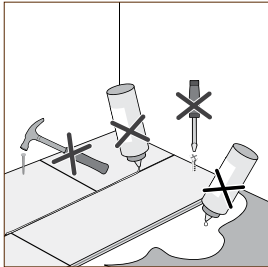
Inspect all planks in sufficient light before and during installation. Planks with visible defects must never be used.



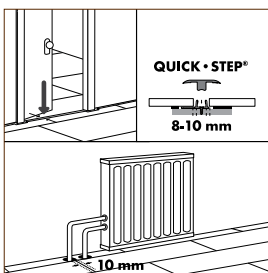
The floor should preferably be installed parallel to how the light enters the room (visually more attractive).



Make sure the panels are mixed sufficiently when you install them, so that you do not end up with too many identical, light or dark panels next to each other.

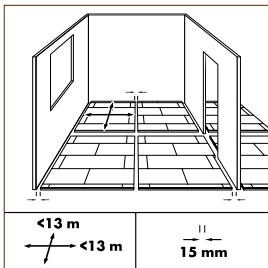


Uniclic® Multifit is a revolutionary system for installing floating laminate floors without using glue. The panels can be clicked together easily thanks to the ingenious shape of the tongue and groove.



Wood is the main component of this Quick • Step® floor. Because room humidity can vary – for example, between summer and winter – it is vital that the floor is able to expand and contract. That's why you must leave an expansion joint on all sides of the floor of minimum 8 to 10 mm, also around pipes, under doors and at doorsteps. Remember that the floor may move in one direction.

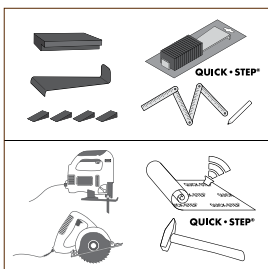
In any case, make sure there is an expansion joint between different rooms (under doors, for example). These expansion joints are sealed with a profile attached to the subfloor.



Large rooms must have expansion joints every 13 m breadthwise to the panels and every 13 m lengthwise. Expansion and contraction are linear, so the greater the surface area, the greater the tolerances need to be.

Uniclic® Multifit panels are not suitable for use in damp spaces like bathrooms and saunas.

## INSTALLATION

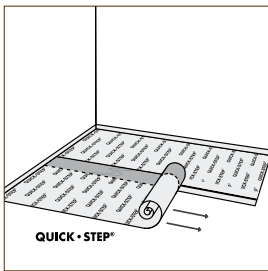


In addition to the standard tools (such as a hammer, saw, pencil, tape measure) for laying wooden floors, you will need the following accessories: installation kit (crowbar, spacers and special tapping block suitable for Uniclic®) – underlay system maintenance products

The use of accessories other than Quick • Step® accessories may cause damage to the Quick • Step® floor. In that case the warranty provided by Quick • Step® will be void. For this reason we would advise you to use only Quick • Step® accessories, which have been specially designed and tested for use with Quick • Step® floor panels.

You can choose where you want to begin laying. Think about what will be the easiest way to install the floor.

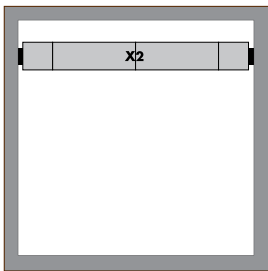
Uniclic® Multifit is a revolutionary system for laying wooden floors. The panels can easily be clicked together, thanks to the ingenious shape of the tongue and groove. Uniclic Multifit is unique because you can lay the planks in three different ways. A. Click together at an angle of 20-30°. B. Press the short side down. C. Slide together horizontally (in difficult situations) with the Uniclic Multifit tapping block



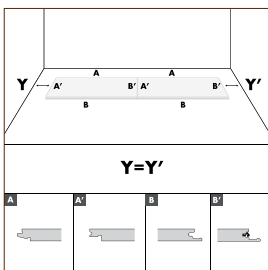
First lay the underlay across the breadth of the room and then gradually as you lay the planks.

It is vital that you use a levelling underlay to smooth away any unevenness in the floor base. The specially developed Quick • Step® 2in1 underlay floors have a damp-proof, insulating, noise-reducing and levelling function. The level top layer ensures easy laying of the laminate panels and facilitates ample expansion afterwards. You can find more information about Quick • Step® 2in1 underlay floors and how to use them on the package of your underlay floor or from your dealer.

Let the foil extend upwards against the wall before cutting it to size. A skirting-board can be attached to the wall later.

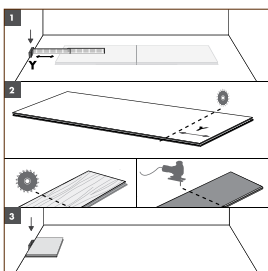


Start by laying the second row.



You will obtain the most attractive effect by laying the floor symmetrically in the room. To do this, the panels of the outside rows must have the same width in the length and the breadth of the room. To do this, measure the room and make sure distance Y is equal to distance Y' when you saw the panels.

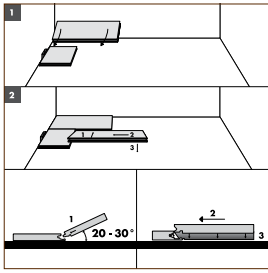
Always lay the planks with both tongue sides facing the wall in the corner of the room where you start.



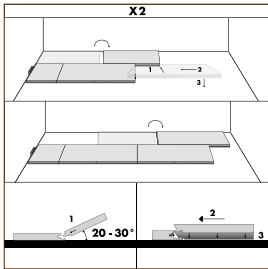
Then calculate and saw the Y piece. Don't forget to allow for the expansion joint.

Note: For a clean saw-cut, you must keep the top surface of the plank underneath when sawing with a jigsaw or handheld circular saw and on top when using a hand saw or cross-cut saw.

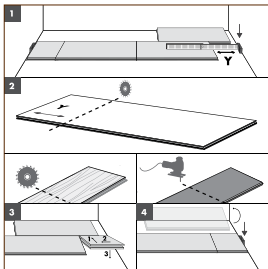
Lay this plank and put spacers between the plank and the wall for the expansion joint.



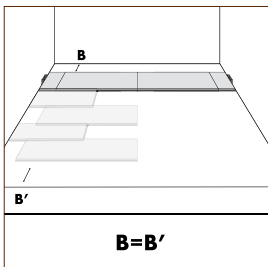
1. Click an unsawn panel lengthwise onto this panel for the first row as indicated in the diagram. Position the panel at an angle of 20-30° to the panel already installed. Move the panel to be fitted slightly up and down, while at the same time exerting a forward pressure. The panels will then click into place together.
2. Tilt the second panel of the second row in the previous row while holding the panel at an angle of 20-30° and moving it against the first panel of the second row. Then press the panel down (drop-down system). The panels will then click into place together.



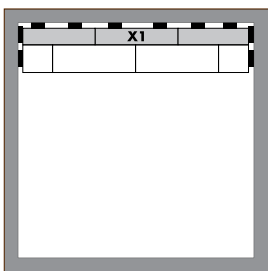
Slide the entire panel of the first row until it overlaps the cross joint between the second and third panel of the second row.  
 Now you can lay the third panel of the second row in the same manner as the second panel of the second row.  
 Slide the entire panel of the first row until it overlaps the cross joint between the third and fourth panel of the second row.  
 Finish the second row with as many as possible unsawn panels.



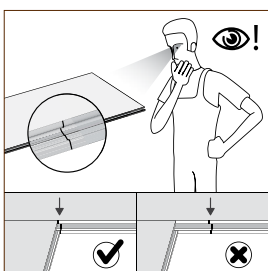
All you need to do now is finish the right side of this row. Measure the distance between the right side wall and the row already laid. Don't forget to allow for the expansion joint. Click the sawn end piece Y at the end of the row already laid. Put spacers between this panel and the wall. Remove the panel of the first row.



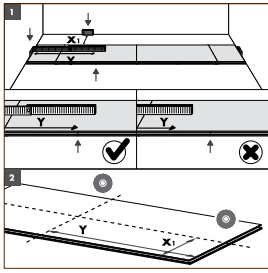
The preceding steps explained how to lay the floor symmetrically in one direction of the room. Now you must position the floor correctly in the other direction to ensure it is symmetrical. Slide the row already laid so distance B is equal to distance B'.



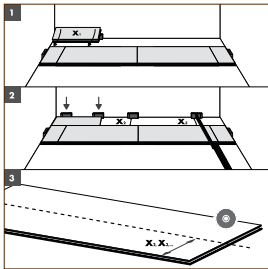
In a following step you must lay the sawn panels between the wall and the row already laid. We continue with the installation of this first (sawn) row.



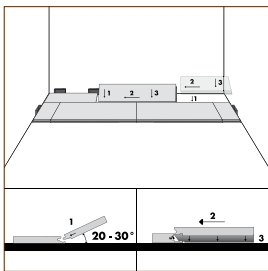
The panels are marked on the long groove joints. Make sure the edge of the panel always corresponds with a mark on a panel of the previous or following row.



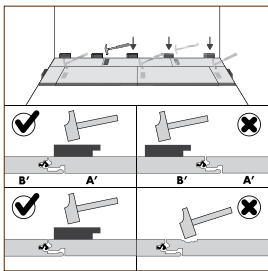
Measure the distance  $X_1$  between the rows already laid and the wall and allow space for the expansion joint.  
 Measure the length of panel ( $=Y$ ). Make sure the edge of the panel corresponds with the mark on the second tile of the row already laid. Don't forget to allow space for the expansion joint. Saw this panel.



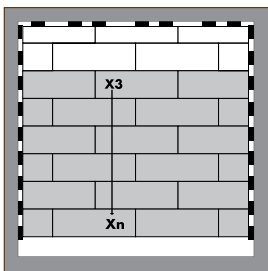
Click the first panel of the sawn row in the row already laid. Put spacers between this panel and the wall.  
 You can finish the entire row X-panels by measuring and sawing all pieces.



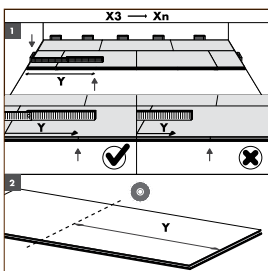
Tilt the second panel of the sawn row in the row already laid while holding the panel at an angle of  $20-30^\circ$  and moving it against the first panel of the sawn row. Press the panel down (drop-down system) and the panels will engage automatically.  
 Finish off the row in the same manner.



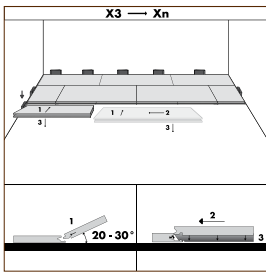
To make sure the cross joint between the panels is snug, tap the panel gently on the tongue side of the joint and as close to the joint as possible. Do this carefully to avoid damaging the panels. Use an undamaged tapping block or a (soft) rubber hammer.



The following instructions are for laying the third to the last row.



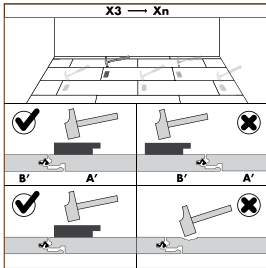
Measure and saw the first panel of the third row. Don't forget to allow for the expansion joint and take the marks on the tile into account.



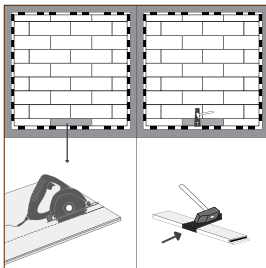
Click the first panel of the third row in the previous row. Put spacers between this panel and the wall for the expansion joint.

Tilt the second panel of the third row in the previous row while holding the panel at an angle of 20-30° and moving it against the first panel of the third row. Press the panel down (drop-down system) and the panels will engage automatically.

Repeat this procedure for all subsequent rows.



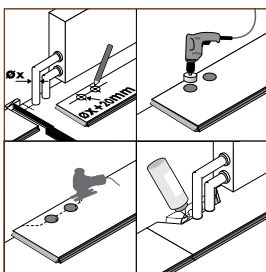
Again, to make sure the cross joint between the panels is snug, tap the panels gently on the tongue side of the joints and as close to the joint as possible. Do this carefully to avoid damaging the panels. Use an undamaged tapping block or a (soft) rubber hammer.



There must also be an 8 to 10 mm expansion joint between the last row and the wall. Keep this in mind when sawing the last row of panels.

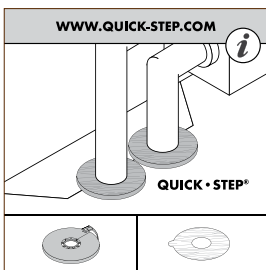
In places where it is difficult to lay the Uniclic® Multifit planks with the tapping block (e.g. next to a wall), you can tap them together with the crowbar and a hammer.

## OBSTACLES

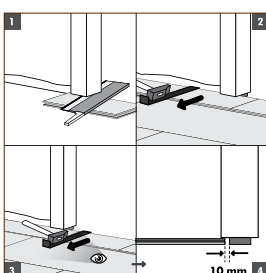


Proceed as follows:

1. Measure where the pipe will come through the plank. Don't forget to allow for the expansion joint.
2. Take a drill bit measuring the diameter of the pipe plus +20 mm for the expansion. Drill through the panel where the pipe will come through.
3. Extend the hole to the edge of the panel.
4. Lay the panel around the pipe.
5. Take another panel and saw a piece that fits exactly in the remaining hole, and glue this piece with wood glue.

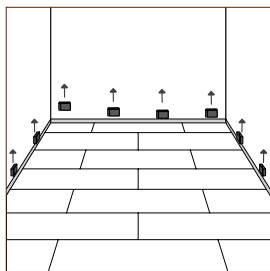


For a perfect finish around pipes, use Quick•Step® pipe covers or an elastic paste (Quick•Step® Kit).

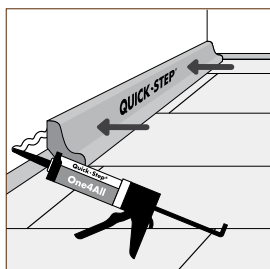


When sawing the panels ensure that the expansion joint under the door is at least 10 mm. If you cannot lift the panel, use an adapted tapping block or crowbar and hammer to tap the panels together.

## FINISHING

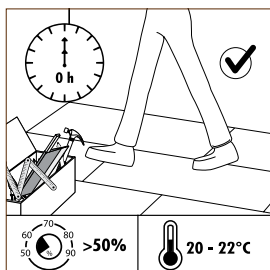


Remove all spacers.

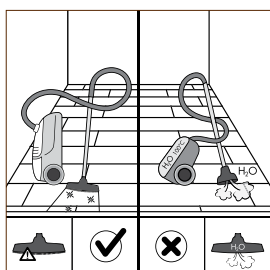


Install the skirting-board on the plastic foil that extends up the wall from under the floor. Never attach the skirting-board to the floor. This method allows the floor to expand and contract under the skirting-board. In places where profiles or skirting-boards cannot be placed, fill expansion joints with elastic paste (Quick • Step® Kit).

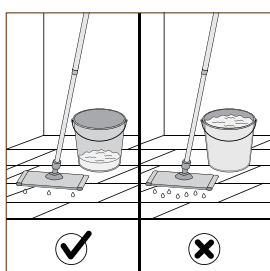
## MAINTENANCE



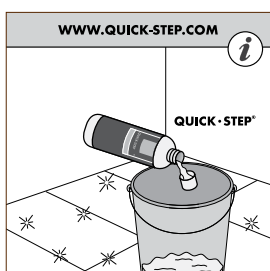
You can walk on the floor during and immediately after installation. Ensure that humidity in the room is always at least 50%. Use a humidifier if necessary.



Dry maintenance is possible with Quick • Step® microfiber cloth or with a vacuum cleaner. Make sure it is equipped with soft wheels and a special parquet brush to avoid scratches on your floor. Never use a steam cleaner.



Wet maintenance is absolutely forbidden.



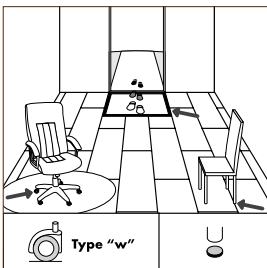
For slightly damp maintenance, we advise Quick • Step® maintenance products (see instructions provided with these products). Be aware that the use of other cleaning products might damage your floor. Always wipe dry immediately until no more moisture is visible on the floor. We strongly recommend dry maintenance only for bevelled-edged products.



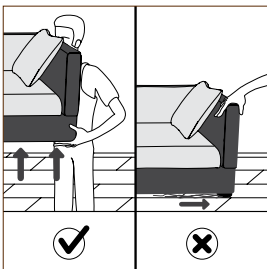
The smooth surface of your laminate means it never absorbs dirt or dust.  
Remove stubborn stains carefully with Quick•Step® Force stain remover or some acetone.  
Never use scouring products.  
Never use wax or varnish on the floor.  
Prevent moisture creeping between the panels and under the floor.



Remove any water immediately.



Protect furniture and chair legs with strong felt caps.  
Avoid bringing dirt, water and sand indoors by providing a suitable floor mat at the door.  
Use (office) chairs and seats with soft casters Type W (EN 12590) that are suitable for a laminate floor and/or use a suitable desk mat.



Lift furniture and never drag it over the floor.